



---

## New Construction

PROGRESS UPDATE

January 2023

---

# Southeast Pre K-12 School



## PROJECT SUMMARY

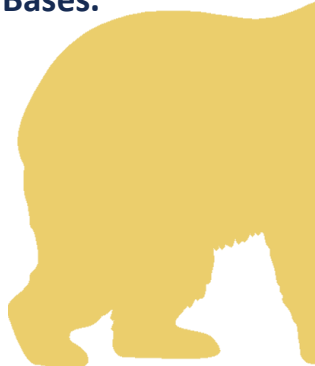
### Site Development & Landscaping

#### January 2023 Progress

- Site
- Utilities
  - Continue Site Lighting Conduit– 75%
  - Underground Power Conduit– 75%
  - Underground Data Conduit– 90%

#### Upcoming Progress

- Begin Light Pole Bases.

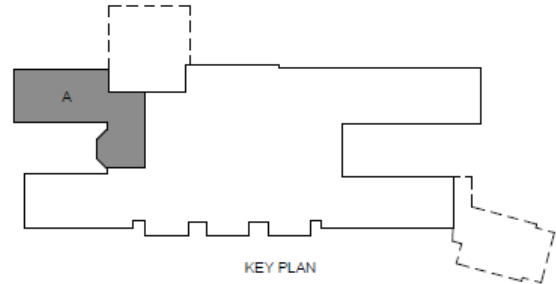


## PROJECT SUMMARY

### Area A

#### January 2023 Progress

- Under Slab Branch Conduit – 85%
- Slab on Grade Preparation– 25%



#### Upcoming Progress

- Pour Slab on Grade

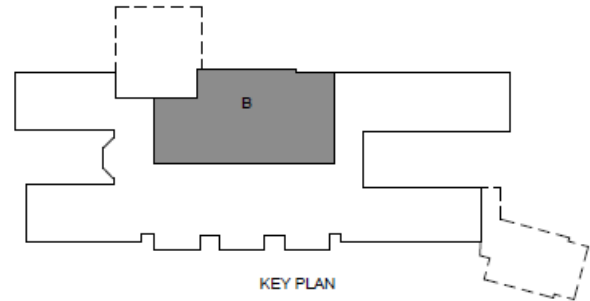


## PROJECT SUMMARY

### Area B

#### January 2023 Progress

- Foundations– 85%
- Underground Electrical Mains– 90%
- Below Grade CMU– 25%



#### Upcoming Progress

- Continuing Foundations and Underground Electrical Mains.
- Continue Below Grade CMU

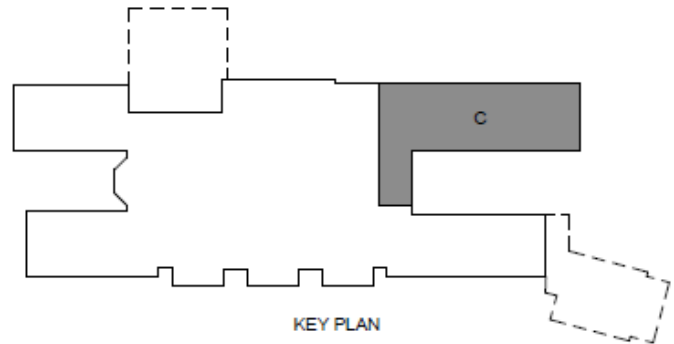


## PROJECT SUMMARY

### Area C

#### January 2023 Progress

- Under Slab Branch Conduit– 100%
- Slab on Grade Preparation– 100%
- Slab on Grade Pouring– 50%
- CMU Walls to Bearing– 45%



#### Upcoming Progress

- Continue CMU to Bearing
- Set Steel for Operable Partitions

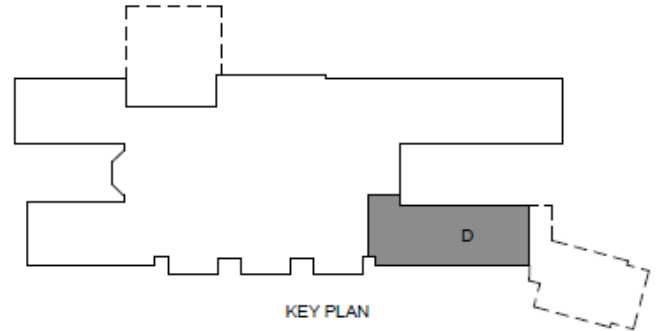


## PROJECT SUMMARY

### Area D

#### January 2023 Progress

- Under Slab Branch Elect.– 100%
- Backfill and Foam Board Installation– 100%
- Slab on Grade Preparation– 100%



#### Upcoming Progress

- Slab on Grade Pour  
( Weather Permitting)



## PROJECT SUMMARY

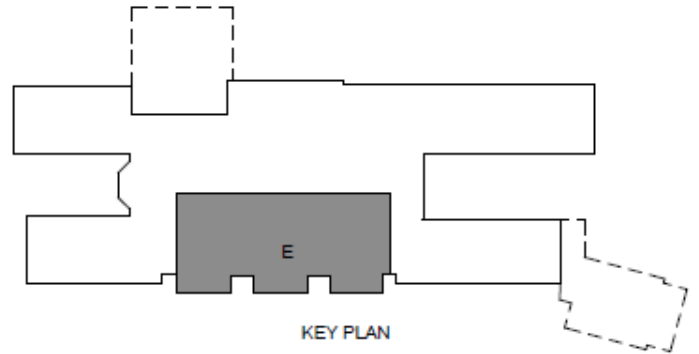
### Area E

#### January 2023 Progress

- Underground Sanitary– 90%
- CMU to Bearing– 3%

#### Upcoming Progress

- Continue Sanitary Piping
- Continue CMU to Bearing  
( weather permitting)

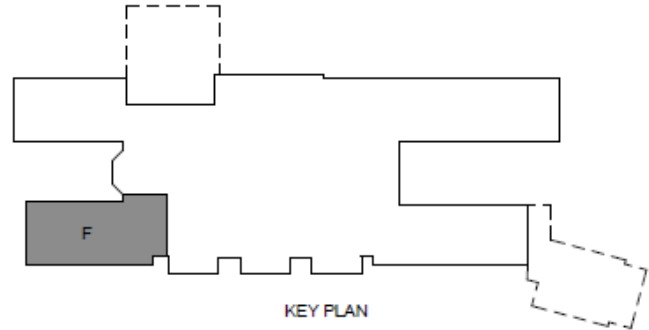


## PROJECT SUMMARY

### Area F

#### January 2023 Progress

- Below Grade CMU– 100%
- Slab on Grade Preparation– 90%
- Electric Branch Conduit– 90%



#### Upcoming Progress

- Slab on Grade Pour  
(Weather Permitting)



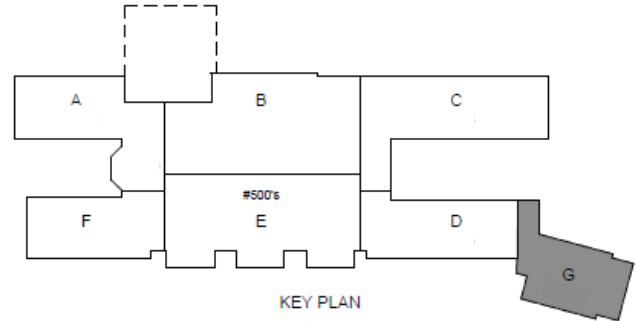


## PROJECT SUMMARY

### Area G

#### January 2023 Progress

- Foundations– 100%
- Underground Feeder Conduit– 100%
- Below Grade CMU– 95%



#### Upcoming Progress

- Slab on Grade Preparation
- Start Electrical Branch Conduit

